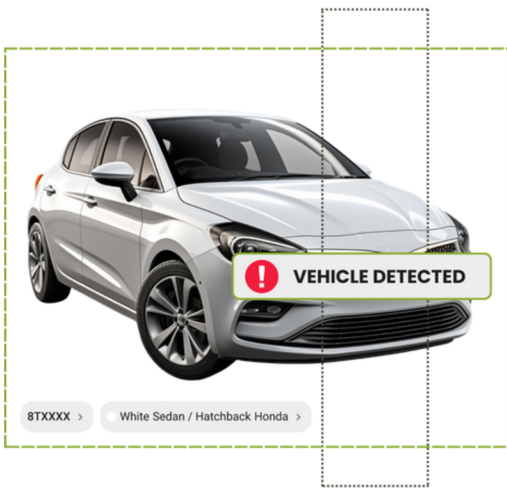


# SCT+ AI

## MONITOR ALERT PROTECT

— with Intelligent and Cost-Effective

## Solar AI Camera Trailer



— INTELLIGENT RECOGNITION

### SEARCH VEHICLES BY COLOR, BRAND, TYPE, AND LICENSE PLATE

Stay ahead with AI capabilities that identify vehicles based on specific details like colour, brand, or license plate numbers. This feature enhances precision and boosts efficiency, perfect for monitoring parking lots or tracking high-risk vehicles.

- ✔ Instantly identify vehicles for better security.
- ✔ Automate parking lot monitoring.
- ✔ Save time with advanced vehicle tracking.
- ✔ Improve incident resolution with detailed vehicle data.

— FACIAL AND CLOTHING RECOGNITION

### SEARCH PEOPLE BY FACE, COLOR OF CLOTHING

Facial and clothing recognition helps users find specific individuals, saving time during incident reviews and improving efficiency in locating suspects.

- ✔ Find people quickly by their facial features.
- ✔ Search based on clothing color for faster identification.
- ✔ Useful for reviewing incidents and improving response time.
- ✔ Enhance safety by identifying unauthorized personnel.





— ADVANCED CAMERA SYSTEM INTEGRATION

## ADVANCED PTZ TECHNOLOGY, SUPPORTING UP TO FOUR DUAL-LENS

Empower your surveillance with a cutting-edge multi-camera system designed for comprehensive monitoring and advanced PTZ control.

- ✓ Precision 25x Optical Zoom for Detail Capture
- ✓ Smart Intrusion Detection with False Alarm Reduction
- ✓ Multi-Camera Monitoring for Broad Coverage
- ✓ Low-Light Surveillance with LightHunter Technology

— LONG-LASTING POWER

## 11 KWH LITHIUM BATTERY WITH 1500W SOLAR PANELS

Our camera trailer ensures continuous operation, powered by an 11 kWh lithium battery and high-efficiency 1500W SunPower solar panels. Even in low-light conditions, you stay protected.

- ✓ Continuous surveillance with renewable energy.
- ✓ Zero downtime, even during cloudy days.
- ✓ Eco-friendly power reduces operational costs.
- ✓ Ideal for off-grid and remote sites.



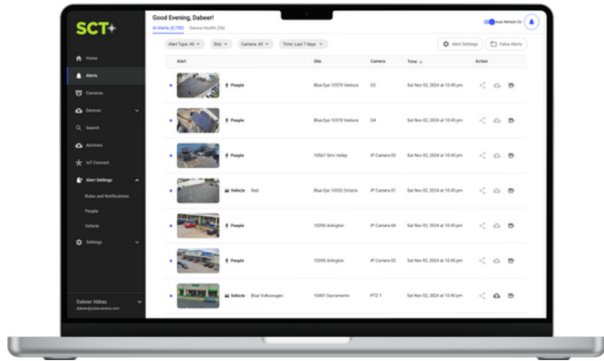
— SECURITY LIGHTS & SPEAKER

## PUSH BUTTON SPEAKER & SECURITY LIGHTS

Leverage the power of motion-activated security lighting and two-way communication to keep your premises secure, visible, and responsive.

- ✓ Motion-triggered lights deter trespassers and unwanted visitors.
- ✓ Push Button to talk to criminals and scare them away.
- ✓ Provides extra security for dark or vulnerable areas of your property.
- ✓ Remote Control via App for Both Lights and Speakers

[LEARN MORE](#)



— PROACTIVE ALERTS

## SMART ALERTS FOR PEOPLE AND VEHICLES

Receive immediate notifications when our AI detects the movement of people or vehicles in critical areas. Our Smart Alerts ensure you're always informed, helping you respond faster to any situation.

- ✔ Create customized people and vehicle alerts.
- ✔ Customizable alert zones for targeted monitoring.
- ✔ Stay connected with alerts via mobile or desktop.
- ✔ Enhance safety with faster response times.

### Electrical Specification

<b>Solar Generation</b>	1600W
<b>Lumens</b>	51200
<b>Battery System</b>	11 kWh Lithium
<b>System Voltage</b>	5/12/24/48 VDC
<b>AC Charger</b>	110V AC
<b>AC Output</b>	120V AC

### Mechanical Specification

<b>Weight</b>	1300 lbs - 1500 lbs
<b>Mast Height</b>	9.5' - 23'
<b>Camera/Light Rotation</b>	360°
<b>Mast Raise/Extension</b>	Manually
<b>Max Wind Rating Speed</b>	70 kph

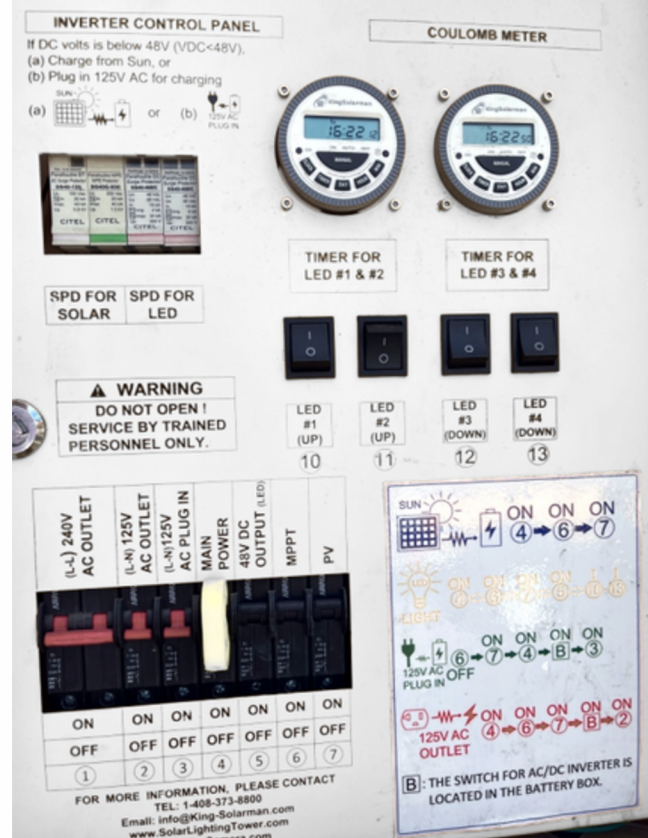
### Dimensions

<b>Closed</b>	50" (W) X 87" (L) X 134" (H)
<b>Open</b>	125" (W) X 123" (L) X 276" (H)

### Warranty

**5 Year Warranty**

### Control Box



### Contact Us

www.SolarCamera.com | Info@king-solarman.com  
408-373-8800 | 725-502-8800 | 909-563-3000

Northern California:  
560 Coleman Ave. San Jose CA 95110  
Southern California:  
1261 S. Grove Ave. Ontario, CA 91761  
Southern Nevada:  
5333 W Oakey Blvd Las Vegas NV 89146

### SCAN for more information!

